

Grand Old Flag

You're a grand old flag..

2x

click

Musical notation for the first section, consisting of two staves. The top staff is labeled 'click' and the bottom staff is labeled 'top'. Both staves are in 4/4 time. The 'click' staff features a sequence of four quarter notes with 'x' marks above them, followed by a quarter rest, and then another sequence of four quarter notes with 'x' marks. The 'top' staff features a sequence of four quarter notes, followed by a quarter rest, and then another sequence of four quarter notes. Below the 'top' staff, the letters 'R L R L' are written under each of the eight quarter notes. Both staves end with a double bar line and repeat dots. A '2x' marking is placed at the end of the 'click' staff.

Every heart beats true

rim

side

Musical notation for the second section, consisting of two staves. The top staff is labeled 'rim' and the bottom staff is labeled 'side'. Both staves are in 4/4 time. The 'rim' staff features a sequence of four quarter notes, followed by a quarter rest, and then another sequence of four quarter notes. The 'side' staff features a sequence of four quarter notes, followed by a quarter rest, and then another sequence of four quarter notes. Both staves end with a double bar line.

Should auld acquaintance

click

top

Detailed description: This block contains two staves of musical notation. The top staff, labeled 'click', features a series of three black rectangular marks on the line, followed by three 'x' marks with vertical stems extending downwards, and a final eighth note with a flag. The bottom staff, labeled 'top', shows a sequence of eighth notes with stems extending downwards, some of which have black rectangular marks at their base. The notation is divided into measures by vertical bar lines.

instrumental

rim

top

2x

Detailed description: This block contains two staves of musical notation. The top staff, labeled 'rim', begins with a double bar line and repeat dots, followed by eighth notes with stems extending downwards, some with black rectangular marks at their base. It ends with a double bar line and repeat dots, and a '2x' marking above the final bar line. The bottom staff, labeled 'top', also begins with a double bar line and repeat dots, followed by eighth notes with stems extending downwards, some with black rectangular marks at their base, and ends with a double bar line and repeat dots.

Grand Old Flag

rim

Musical notation for the rim of a snare drum. The staff shows a sequence of notes: a quarter rest, followed by a quarter note on the line, a quarter note on the space, and a quarter note on the line. This sequence is repeated. The notes are marked with a '17' and a '3'.

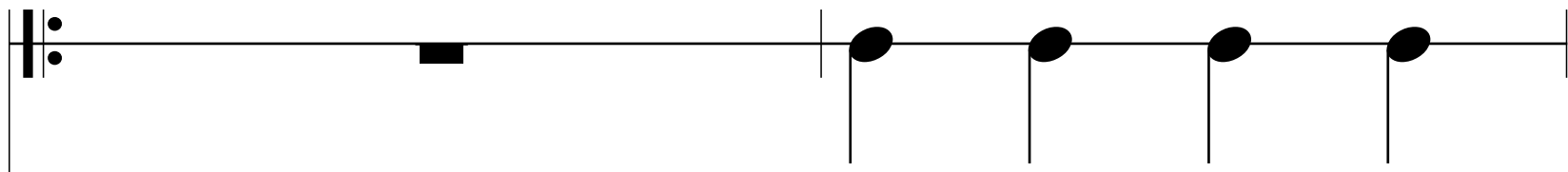
side

Musical notation for the side of a snare drum. The staff shows a sequence of notes: a quarter note on the line, a quarter note on the space, a quarter note on the line, and a quarter note on the space. This sequence is repeated. The notes are marked with a '17' and a '3'.

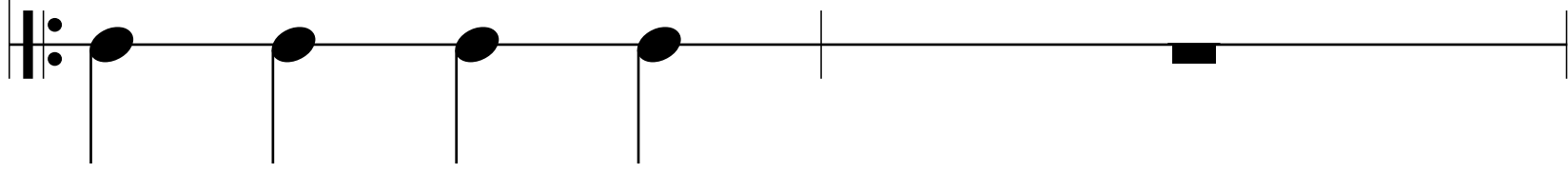
top

Musical notation for the top of a snare drum. The staff shows a sequence of notes: a quarter note on the line, a quarter note on the space, a quarter note on the line, a quarter note on the space, a quarter note on the line, and a quarter note on the space. This sequence is repeated. The notes are marked with a '17' and a '3'.

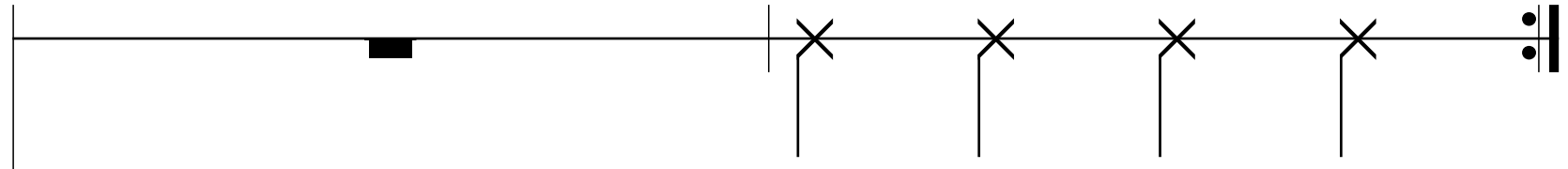
top



side



click



rim

