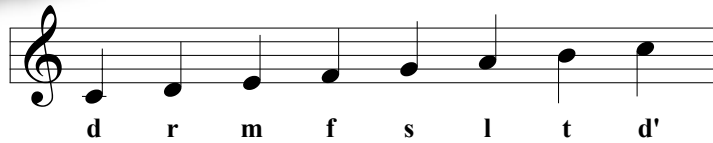


Music Activity

Name: _____

Grade: _____



Reviewing the Scale



whole, whole, half, whole, whole, whole, half

The notes of the **C scale** are shown on the keyboard above. Do to re is a **whole step**.

You can tell it is a whole step because there is a black key between the white keys.

Mi to fa has no black key in between, so mi to fa is a **half step**. Using the keyboard, write whether the following steps are whole steps or half steps.

1. do' to ti is a half step.
2. ti to la is a _____ step.
3. la to so is a whole step.
4. so to fa is a _____ step.
5. fa to mi is a _____ step.
6. mi to re is a _____ step.
7. re to do is a _____ step.

The pattern of steps that makes up a major scale is whole, whole, half, whole, whole, whole, half.

To do: Name the solfa notes.

65. Chumbara

Camp Song



