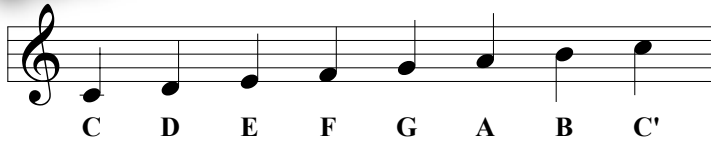


Music Activity

Name: _____

Grade: _____



Reviewing the Scale



whole, whole, half, whole, whole, whole, half

The notes of the **C scale** are shown on the keyboard above. C to D is a **whole step**. You can tell it is a whole step because there is a black key between the white keys. E to F has no black key in between, so E to F is a **half step**. Using the keyboard, write whether the following steps are whole steps or half steps.

1. C to B is a half step.
2. B to A is a _____ step.
3. A to G is a whole step.
4. G to F is a _____ step.
5. F to E is a _____ step.
6. E to D is a _____ step.
7. D to C is a _____ step.

The pattern of steps that makes up a major scale is whole, whole, half, whole, whole, whole, half.

To do: Name the notes.

65. Chumbara

Camp Song



